

# Monthly Statistical Report

## September 2011



Circulation by Material Type (all locations)				
	Sep. '10	Sep. '11	YTD 2010	YTD 2011
Audiobook	10,357	9,605	94,678	87,036
Fiction	18,310	16,366	157,898	153,922
Nonfiction	14,871	12,607	129,424	124,158
Children's	18,304	18,219	152,782	163,555
Video	50,950	48,312	434,055	446,263
Periodicals	1,929	1,782	15,884	18,337
Book Dnld	532	959	4,017	8,059
Music Dnld		1,145		9,432
Misc.	11	20	93	151
<b>Total</b>	<b>115,264</b>	<b>109,015</b>	<b>988,831</b>	<b>1,010,913</b>

Computer Use				
	Sep. '10	Sep. '11	YTD 2010	YTD 2011
Arbor/West	2,378	2,064	10,277	21,266
Bach	1,454	1,387	6,481	12,017
Delaware	2,316	1,714	20,417	18,338
Howe	1,948	1,564	15,968	15,722
Main	6,195	5,944	57,855	55,462
North Albany	1,115	949	8,241	7,961
Pine Hills	3,047	2,744	24,877	26,398
<b>Total</b>	<b>18,453</b>	<b>16,366</b>	<b>144,116</b>	<b>157,164</b>

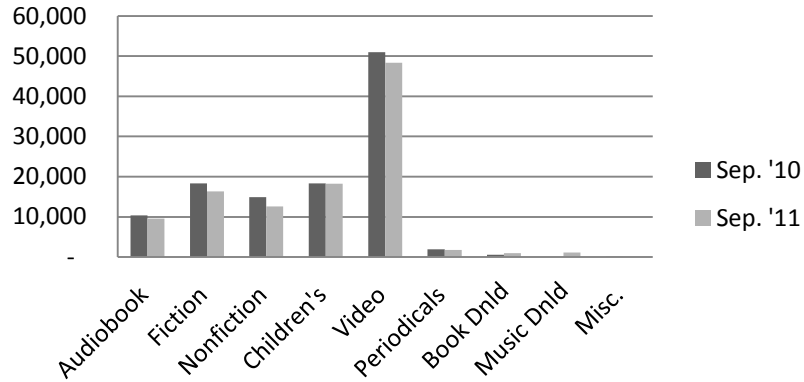
Door Count				
	Sep. '10	Sep. '11	YTD 2010	YTD 2011
Arbor/West	8,387	6,275	35,460	61,548
Bach	8,551	8,652	38,955	70,919
Delaware	10,537	10,974	102,355	90,582
Howe	7,893	6,634	66,788	68,022
Main	37,097	39,548	371,559	342,164
North Albany	4,489	3,955	41,595	35,732
Pine Hills	22,378	13,680	190,057	176,254
<b>Total</b>	<b>99,332</b>	<b>89,718</b>	<b>846,769</b>	<b>845,221</b>

Circulation by Location				
	Sep. '10	Sep. '11	YTD 2010	YTD 2011
Arbor/West	11,869	9,315	49,586	88,856
Bach	13,124	11,562	63,623	108,827
Delaware	13,547	12,488	134,970	116,511
Howe	8,440	6,849	64,833	67,370
Main	43,877	43,663	436,508	395,851
North Albany	3,822	3,953	39,237	38,532
Pine Hills	20,585	21,185	197,137	194,966
<b>Total</b>	<b>115,264</b>	<b>109,015</b>	<b>985,894</b>	<b>1,010,913</b>

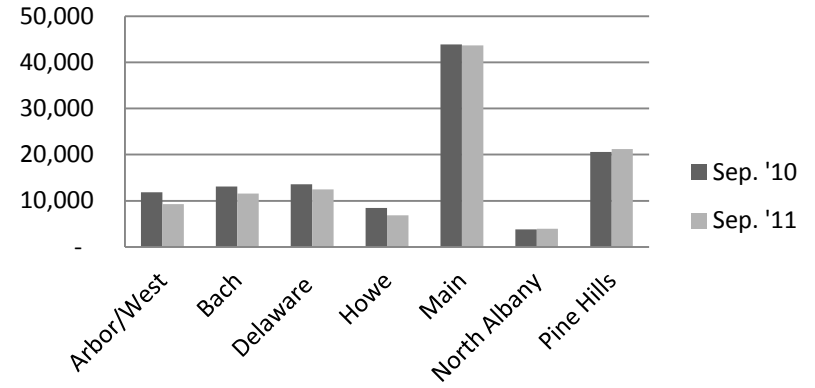
Reference Transactions				
	Sep. '10	Sep. '11	YTD 2010	YTD 2011
Arbor/West	1,023	683	3,716	6,563
Bach	975	1,003	3,849	9,848
Delaware	1,399	1,011	11,287	9,985
Howe	366	1,257	3,280	9,234
Main	4,979	5,299	52,467	55,622
North Albany	154	396	1,408	2,930
Pine Hills	2,330	3,111	13,336	18,540
<b>Total</b>	<b>11,226</b>	<b>12,760</b>	<b>89,343</b>	<b>112,722</b>

New Borrower Registrations				
	Sep. '10	Sep. '11	YTD 2010	YTD 2011
Arbor/West	94	48	595	453
Bach	40	63	267	603
Delaware	135	97	1,011	814
Howe	57	27	563	380
Main	427	379	3,416	3,276
North Albany	17	24	162	228
Pine Hills	140	134	1,372	1,009
<b>Total</b>	<b>910</b>	<b>772</b>	<b>7,386</b>	<b>6,763</b>

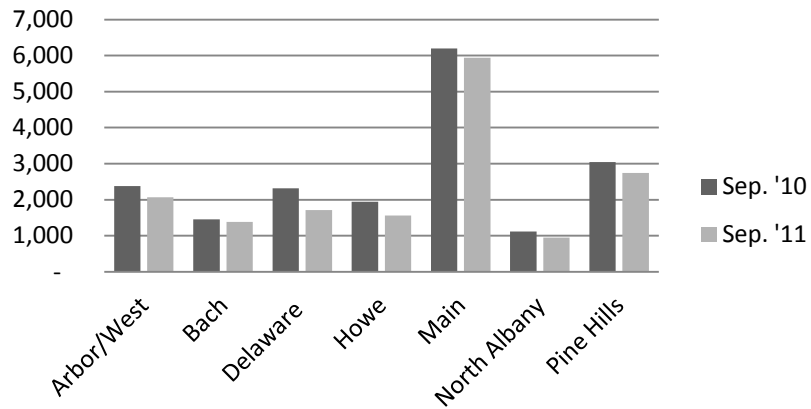
### Circulation by Material Type



### Circulation by Location



### Computer Use



### Reference Transactions

