

Monthly Statistical Report

Oct-10



Circulation by Material Type (all locations)				
	Oct. '09	Oct. '10	YTD 2009	YTD 2010
Audiobook	8,377	10,929	84,546	105,607
Fiction	13,848	17,688	140,245	175,586
Nonfiction	11,186	15,043	113,887	144,467
Children's	10,888	19,774	114,947	172,556
Video	38,439	53,435	394,580	487,490
Periodicals	2,049	1,938	20,664	17,822
E-Content	350	728	3,104	4,745
Misc.	86	2	402	95
Total	85,223	119,537	872,375	1,108,368

Circulation by Location				
	Oct. '09	Oct. '10	YTD 2009	YTD 2010
Arbor/West		12,344	-	61,930
Bach		13,173	-	76,796
Delaware	11,887	13,661	104,273	143,681
Howe	2,833	8,786	32,194	109,684
Main	61,437	44,851	597,167	440,676
North Albany	5,199	4,168	50,417	39,309
Outreach	582	72	7,512	16,673
Pine Hills	3,285	22,482	80,812	219,619
Total	85,223	119,537	872,375	1,108,368

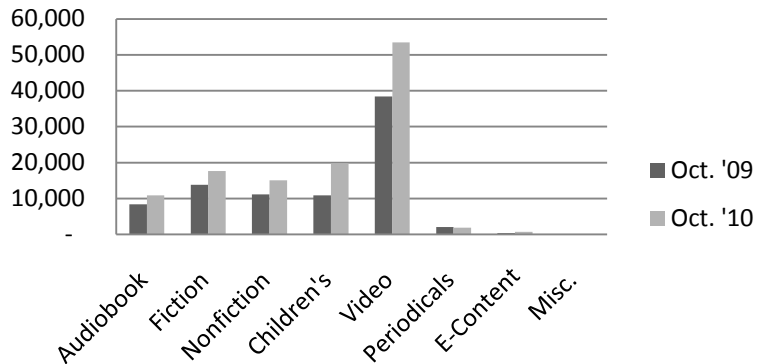
Computer Use				
	Oct. '09	Oct. '10	YTD 2009	YTD 2010
Arbor/West	-	1,246	-	11,523
Bach	-	1,266	-	7,747
Delaware	1,644	2,230	15,081	22,647
Howe	1,124	2,041	10,392	18,009
Main	7,428	6,439	71,492	64,294
North Albany	963	867	9,022	9,108
Pine Hills	0	2,993	10,365	27,870
Total	11,159	17,082	116,352	161,198

Reference Transactions				
	Oct. '09	Oct. '10	YTD 2009	YTD 2010
Arbor/West	-	970	-	4,686
Bach	-	1,033	-	4,882
Delaware	623	1,212	5,637	12,499
Howe	358	612	3,637	3,892
Main	6,263	6,439	56,356	52,696
North Albany	146	142	1,547	1,550
Outreach	109	0	1,427	493
Pine Hills	0	2,900	3,144	16,236
Total	7,499	13,308	71,748	96,934

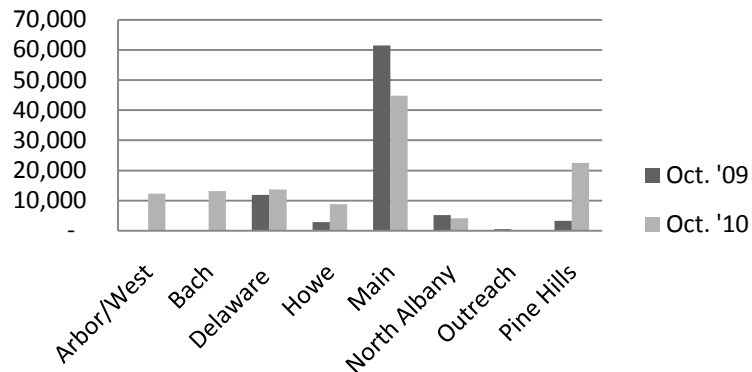
Door Count				
	Oct. '09	Oct. '10	YTD 2009	YTD 2010
Arbor/West	-	6,673	-	42,133
Bach	-	7,619	-	46,574
Delaware	11,517	9,937	85,417	112,292
Howe	2,834	8,022	45,720	74,810
Main	40,754	38,236	459,234	409,795
North Albany	4,319	4,520	44,157	46,115
Outreach	712	0	5,559	2,018
Pine Hills	0	20,022	61,674	210,079
Total	60,136	95,029	701,761	943,816

New Borrower Registrations				
	Oct. '09	Oct. '10	YTD 2009	YTD 2010
Arbor/West	-	63	-	658
Bach	-	106	-	373
Delaware	56	115	596	1,288
Howe	25	74	318	637
Main	327	369	2,896	3,785
North Albany	14	17	153	179
Outreach	23	0	167	31
Pine Hills	22	95	350	1,467
Total	467	839	4,480	8,418

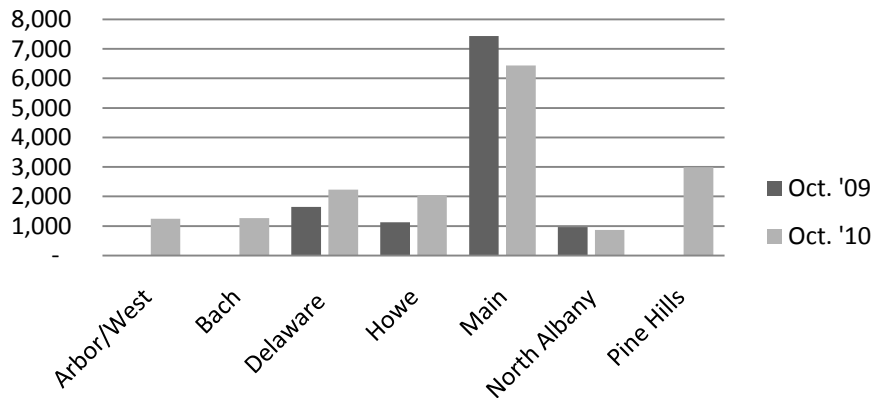
Circulation by Material Type



Circulation by Location



Computer Use



Reference Transactions

