

Monthly Statistical Report

Nov-10



Circulation by Material Type (all locations)				
	Nov. '09	Nov. '10	YTD 2009	YTD 2010
Audiobook	7,998	10,153	92,544	115,760
Fiction	13,123	16,302	153,368	191,888
Nonfiction	10,885	13,522	124,772	157,989
Children's	11,691	18,841	126,638	191,397
Video	35,637	51,488	430,217	538,978
Periodicals	1,590	2,014	22,254	19,836
E-Content	317	737	3,421	5,482
Misc.	83	1	485	96
Total	81,324	113,058	953,699	1,221,426

Circulation by Location				
	Nov. '09	Nov. '10	YTD 2009	YTD 2010
Arbor/West		11,255	-	73,185
Bach		11,862	-	88,658
Delaware	5,854	13,742	110,127	157,423
Howe	2,604	7,822	34,798	117,506
Main	59,371	43,265	656,538	483,941
North Albany	4,947	3,574	55,364	42,883
Outreach	727	-	8,239	16,673
Pine Hills	7,821	21,538	88,633	241,157
Total	81,324	113,058	953,699	1,221,426

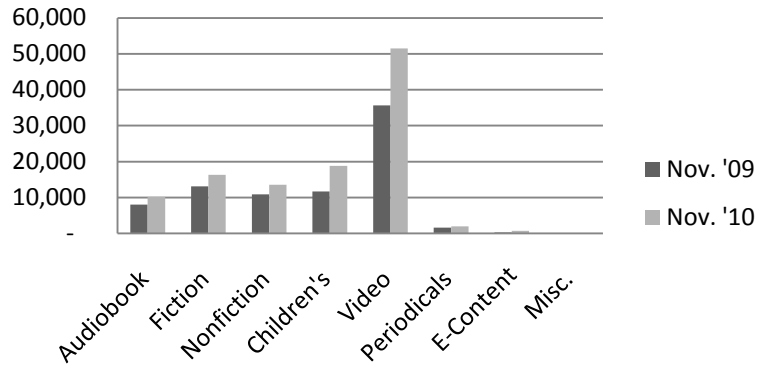
Computer Use				
	Nov. '09	Nov. '10	YTD 2009	YTD 2010
Arbor/West	-	1,577	-	13,100
Bach	-	1,175	-	8,922
Delaware	1,233	2,228	15,081	24,875
Howe	1,097	1,311	10,392	19,320
Main	6,503	5,956	71,492	70,250
North Albany	1,122	930	9,022	10,038
Pine Hills	541	3,138	10,365	31,008
Total	10,496	16,315	116,352	177,513

Reference Transactions				
	Nov. '09	Nov. '10	YTD 2009	YTD 2010
Arbor/West	-	1,119	-	5,805
Bach	-	1,000	-	5,882
Delaware	467	1,302	5,637	13,801
Howe	258	565	3,637	4,457
Main	5,432	5,956	56,356	64,010
North Albany	157	199	1,547	1,749
Outreach	103	0	1,427	493
Pine Hills	150	2,729	3,144	18,965
Total	6,567	12,870	71,748	115,162

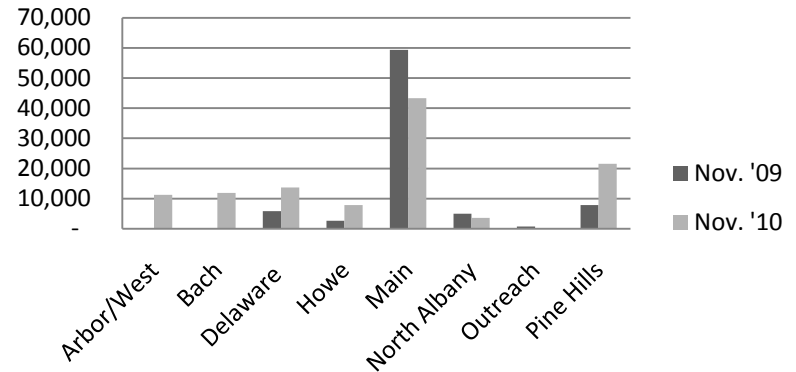
Door Count				
	Nov. '09	Nov. '10	YTD 2009	YTD 2010
Arbor/West	-	9,352	-	51,485
Bach	-	8,183	-	54,757
Delaware	8,638	10,638	85,417	122,930
Howe	4,994	8,457	45,720	83,267
Main	43,031	41,217	459,234	451,012
North Albany	4,842	4,555	44,157	50,670
Outreach	413	0	5,559	2,018
Pine Hills	3,156	22,268	61,674	232,347
Total	65,074	104,670	701,761	1,048,486

New Borrower Registrations				
	Nov. '09	Nov. '10	YTD 2009	YTD 2010
Arbor/West	-	44	-	702
Bach	-	94	-	467
Delaware	25	94	596	1,382
Howe	30	56	318	693
Main	277	349	2,896	4,134
North Albany	12	15	153	194
Outreach	32	0	167	31
Pine Hills	60	95	350	1,552
Total	436	747	4,480	9,155

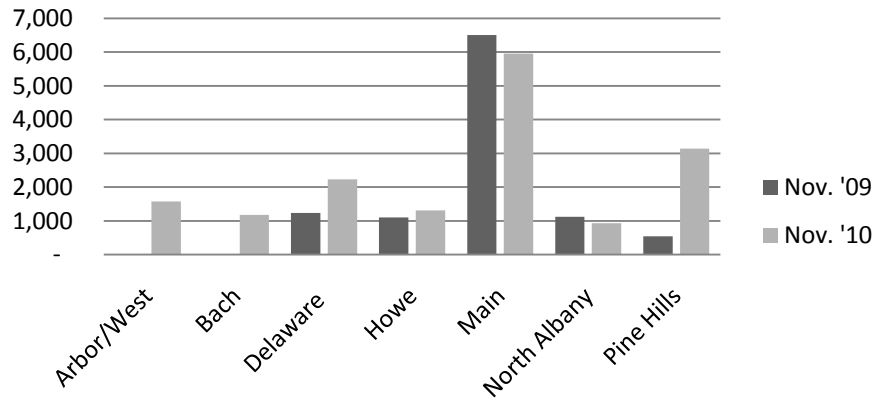
Circulation by Material Type



Circulation by Location



Computer Use



Reference Transactions

