

Monthly Statistical Report

May 2011



Circulation by Material Type (all locations)				
	May. '10	May. '11	YTD 2010	YTD 2011
Audiobook	9,427	8,804	51,723	47,232
Fiction	15,148	15,749	78,218	80,956
Nonfiction	13,208	13,248	67,821	69,963
Children's	14,826	15,715	73,754	84,688
Video	42,028	44,375	223,254	248,631
Periodicals	1,711	2,010	8,428	10,377
Book Dnld	447	927	1,938	4,243
Music Dnld	-	1,177	-	4,839
Misc.	5	9	5	28
Total	96,800	102,014	505,141	550,957

Computer Use				
	May. '10	May. '11	YTD 2010	YTD 2011
Arbor/West	-	1,982	-	11,684
Bach	635	1,289	5,530	6,262
Delaware	2,113	2,000	10,600	9,910
Howe	1,996	1,671	4,913	8,688
Main	5,717	5733	26,819	30,882
North Albany	834	852	3,242	4,127
Pine Hills	2,761	3,233	10,095	13,709
Total	14,056	16,760	61,199	85,262

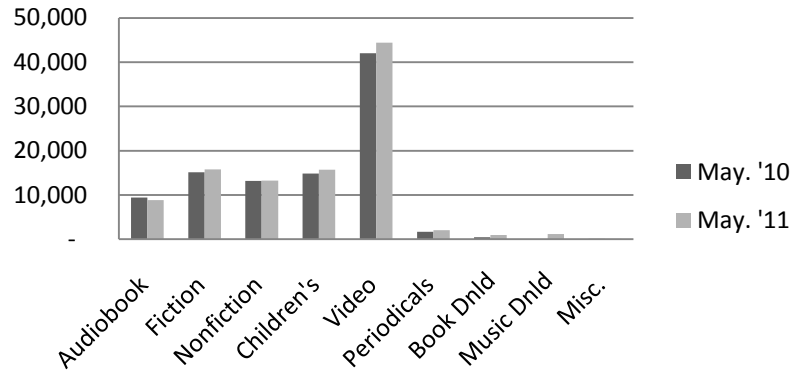
Door Count				
	May. '10	May. '11	YTD 2010	YTD 2011
Arbor/West	-	9,063	-	32,396
Bach	5,530	6,200	5,530	36,258
Delaware	12,039	10,591	58,050	47,272
Howe	7,459	7,664	24,627	39,106
Main	38,083	36,015	171,435	184,558
North Albany	4,485	3,522	18,027	20,535
Pine Hills	20,208	20,115	83,319	98,388
Total	87,804	93,170	360,988	458,513

Circulation by Location				
	May. '10	May. '11	YTD 2010	YTD 2011
Arbor/West	0	8,952	-	48,516
Bach	7,754	10,764	7,754	57,382
Delaware	12,082	11,284	78,408	62,729
Howe	9,386	7,048	28,420	37,700
Main	44,005	41,083	256,229	220,113
North Albany	4,178	3,773	22,218	19,066
Pine Hills	18,924	19,110	109,451	105,451
Total	96,329	102,014	502,480	550,957

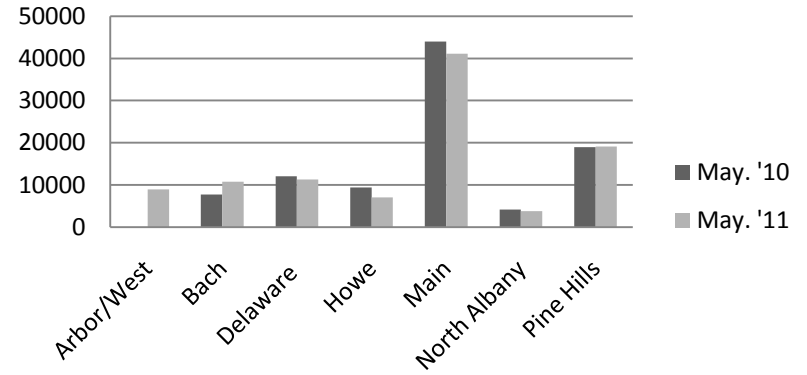
Reference Transactions				
	May. '10	May. '11	YTD 2010	YTD 2011
Arbor/West	-	604	-	3,656
Bach	267	1,150	267	4,960
Delaware	1,160	1,023	5,801	5,575
Howe	381	882	930	5,595
Main	5,766	6,226	24,882	33,850
North Albany	182	253	610	1,142
Pine Hills	1,354	2,022	4,678	9,548
Total	9,110	12,160	37,168	64,326

New Borrower Registrations				
	May. '10	May. '11	YTD 2010	YTD 2011
Arbor/West	-	48	-	222
Bach	635	47	635	283
Delaware	72	72	506	404
Howe	60	49	223	236
Main	293	289	1,344	1,700
North Albany	22	21	63	103
Pine Hills	125	87	604	474
Total	1,207	613	3,375	3,422

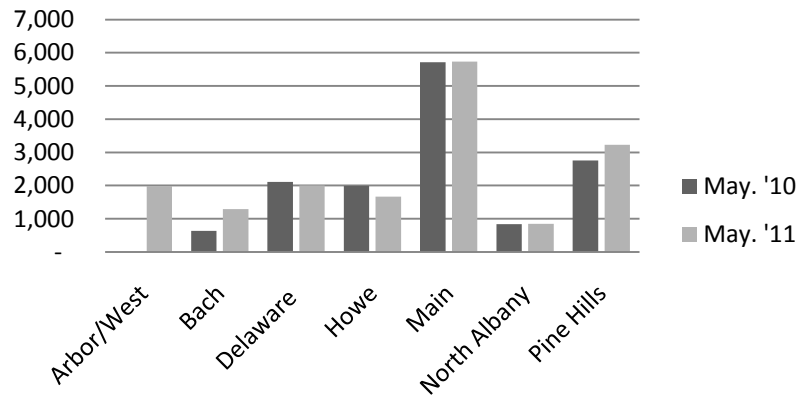
Circulation by Material Type



Circulation by Location



Computer Use



Reference Transactions

