

# Monthly Statistical Report

## May 2010



Circulation by Material Type (all locations)				
	May. '09	May. '10	YTD 2009	YTD 2010
Audiobook	8,213	9,427	43,455	51,723
Fiction	13,642	15,148	64,500	78,218
Nonfiction	11,199	13,208	56,563	67,821
Children's	10,016	14,826	53,966	73,754
Video	36,220	42,028	199,587	223,254
Periodicals	2,024	1,711	10,576	8,428
E-Content	309	447	1,469	1,938
Misc.	21	5	249	5
<b>Total</b>	<b>81,644</b>	<b>96,800</b>	<b>430,365</b>	<b>505,141</b>

Circulation by Location				
	May. '09	May. '10	YTD 2009	YTD 2010
Bach	0	7,754	0	7,754
Bookmobile	932	471	3,485	2,661
Delaware	9037	12,082	49,629	78,408
Howe	2964	9,386	16,099	28,420
Main	55832	44,005	295,132	256,229
North Albany	4569	4,178	24,599	22,218
Pine Hills	8310	18,924	41,421	109,451
<b>Total</b>	<b>81,644</b>	<b>96,800</b>	<b>430,365</b>	<b>505,141</b>

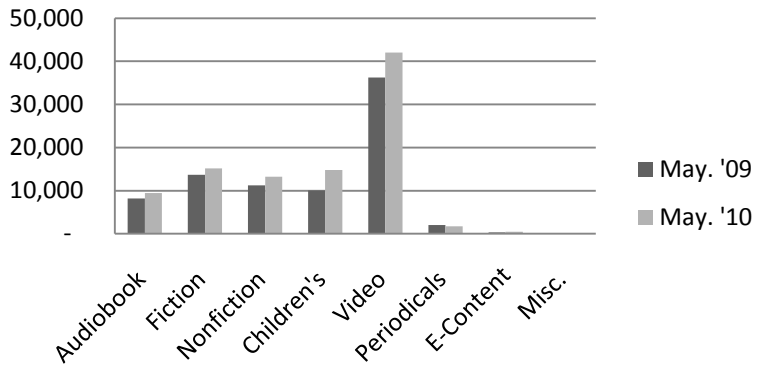
Computer Use				
	May. '09	May. '10	YTD 2009	YTD 2010
Bach	0	635	0	635
Delaware	1,389	2,113	7,115	10,600
Howe	1,232	1,996	5,288	6,909
Main	6,671	5,717	35,442	32,536
North Albany	788	834	4,435	4,076
Pine Hills	1,042	2,761	5,525	12,856
<b>Total</b>	<b>11,122</b>	<b>14,056</b>	<b>57,805</b>	<b>67,612</b>

Reference Transactions				
	May. '09	May. '10	YTD 2009	YTD 2010
Bach	0	267	0	267
Bookmobile	145	76	765	451
Delaware	482	1,160	2,633	5,801
Howe	391	381	1,821	1,311
Main	5,222	5,766	26,963	30,648
North Albany	173	182	817	792
Pine Hills	180	1,354	1,625	6,032
<b>Total</b>	<b>6,593</b>	<b>9,186</b>	<b>34,624</b>	<b>45,302</b>

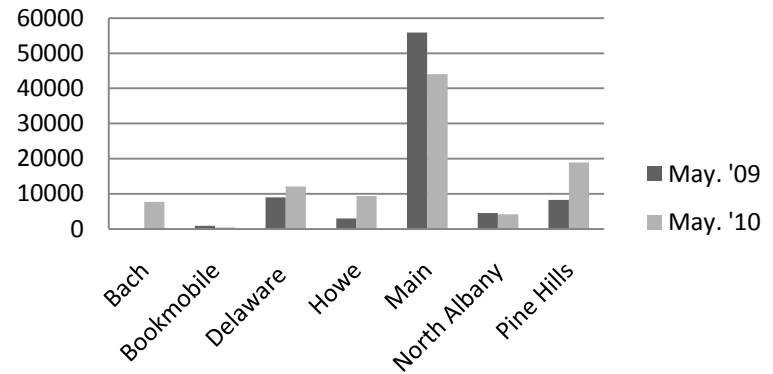
Door Count				
	May. '09	May. '10	YTD 2009	YTD 2010
Bach	0	5,530	0	5,530
Bookmobile	435	256	2,249	1,850
Delaware	5,183	12,039	36,180	58,050
Howe	5,410	7,459	24,852	32,086
Main	41,887	38,083	226,477	209,518
North Albany	3,976		21,578	18,027
Pine Hills	6,334	20,208	32,601	103,527
<b>Total</b>	<b>63,225</b>	<b>83,575</b>	<b>343,937</b>	<b>428,588</b>

New Borrower Registrations				
	May. '09	May. '10	YTD 2009	YTD 2010
Bach	0	75	0	75
Bookmobile	26	8	66	27
Delaware	43	72	261	668
Howe	31	60	160	283
Main	236	293	1,336	1,637
North Albany	10	22	56	85
Pine Hills	31	125	180	729
<b>Total</b>	<b>377</b>	<b>580</b>	<b>2,059</b>	<b>3,429</b>

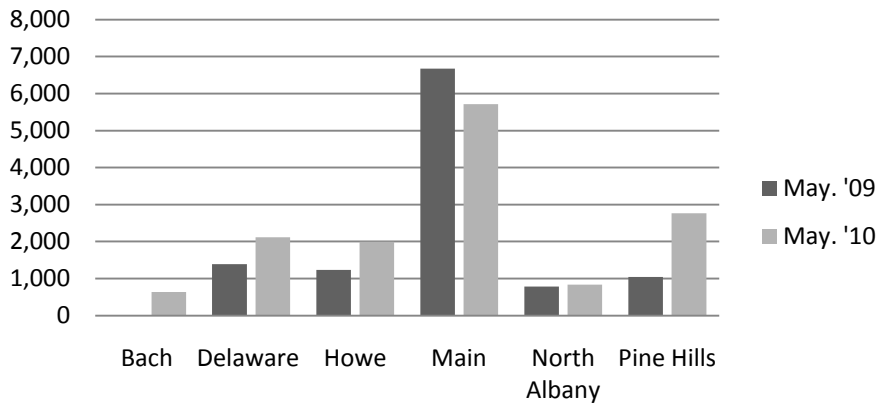
### Circulation by Material Type



### Circulation by Location



### Computer Use



### Reference Transactions

