

Monthly Statistical Report

March 2010



Circulation by Material Type (all locations)				
	Mar. '09	Mar. '10	YTD 2009	YTD 2010
Audiobook	8,802	11,479	26,608	31,735
Fiction	12,338	16,537	37,691	46,764
Nonfiction	12,240	14,446	33,547	40,532
Children's	11,309	15,877	33,218	43,768
Video	41,508	46,687	123,880	134,835
Periodicals	2,316	1,829	6,392	4,858
E-Content	322	362	884	1,139
Misc.	78	-	137	-
Total	88,913	107,217	262,357	303,631

Circulation by Location				
	Mar. '09	Mar. '10	YTD 2009	YTD 2010
Bookmobile	634	650	1,679	1,596
Delaware	10,461	18,066	30,347	50,890
Howe	3,241	4,440	9,857	8,834
Main	61,776	55,489	180,877	161,260
North Albany	4,705	4,708	15,187	13,484
Pine Hills	8,096	23,864	24,410	67,567
Total	88,913	107,217	262,357	303,631

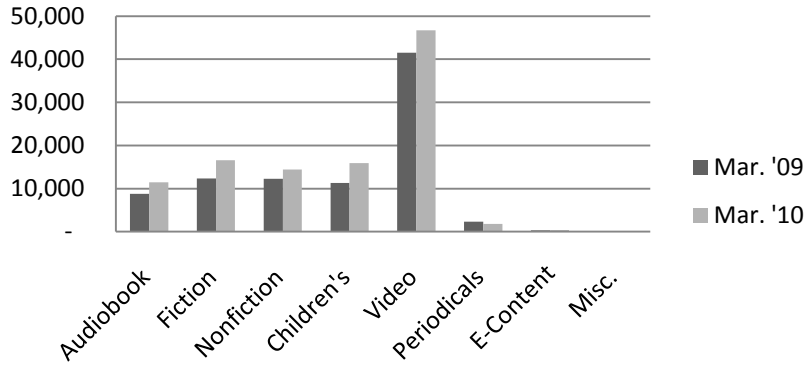
Computer Use				
	Mar. '09	Mar. '10	YTD 2009	YTD 2010
Delaware	1,205	2,434	1,622	6,294
Howe	945	964	1,029	2,778
Main	7,212	7,130	21,315	20,001
North Albany	831	800	936	2,493
Pine Hills	972	1,898	1,045	7,361
Total	11,165	13,226	25,947	38,927

Reference Transactions				
	Mar. '09	Mar. '10	YTD 2009	YTD 2010
Bookmobile	150	101	1,279	1,249
Delaware	532	1,395	1,699	3,351
Howe	368	145	1,081	500
Main	5,333	6,347	16,296	18,634
North Albany	126	187	468	435
Pine Hills	321	1,245	1,118	3,421
Total	6,830	9,420	21,941	27,590

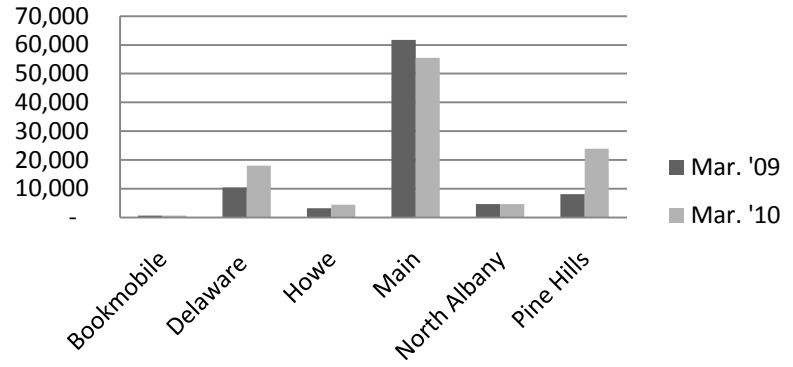
Door Count				
	Mar. '09	Mar. '10	YTD 2009	YTD 2010
Bookmobile	431	591	1,279	1,249
Delaware	6,890	12,049	22,076	35,953
Howe	4,549	6,270	15,439	15,006
Main	59,358	50,129	141,931	127,663
North Albany	4,096	5,639	13,235	14,291
Pine Hills	5,028	19,453	20,881	60,146
Total	80,352	94,131	214,841	254,308

New Borrower Registrations				
	Mar. '09	Mar. '10	YTD 2009	YTD 2010
Bookmobile	16	8	24	13
Delaware	67	133	169	505
Howe	31	85	101	144
Main	267	381	863	1,015
North Albany	13	14	42	43
Pine Hills	41	154	122	471
Total	435	775	1,321	2,191

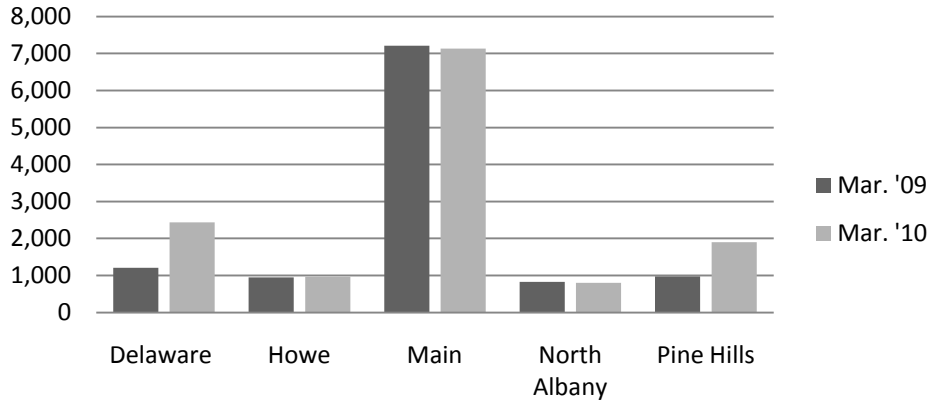
Circulation by Material Type



Circulation by Location



Computer Use



Reference Transactions

