

Monthly Statistical Report

June 2011



Circulation by Material Type (all locations)				
	Jun. '10	Jun. '11	YTD 2010	YTD 2011
Audiobook	10,512	9,368	62,235	56,600
Fiction	19,275	17,684	97,493	98,640
Nonfiction	15,001	13,650	82,822	83,613
Children's	18,184	17,317	91,938	102,005
Video	49,530	47,575	272,784	296,206
Periodicals	1,735	2,077	10,163	12,454
Book Dnld	504	945	2,442	5,188
Music Dnld		1,084		5,923
Misc.	21	-	26	28
Total	114,762	109,700	619,903	660,657

Computer Use				
	Jun. '10	Jun. '11	YTD 2010	YTD 2011
Arbor/West	1,960	2,141	1,960	13,825
Bach	1,130	1,322	7,584	1,765
Delaware	2,278	2,098	12,878	12,008
Howe	2,176	1,848	9,085	10,536
Main	6,363	6,220	38,899	37,102
North Albany	965	811	5,041	4,938
Pine Hills	2,831	3,840	15,687	17,549
Total	17,703	18,280	91,134	97,723

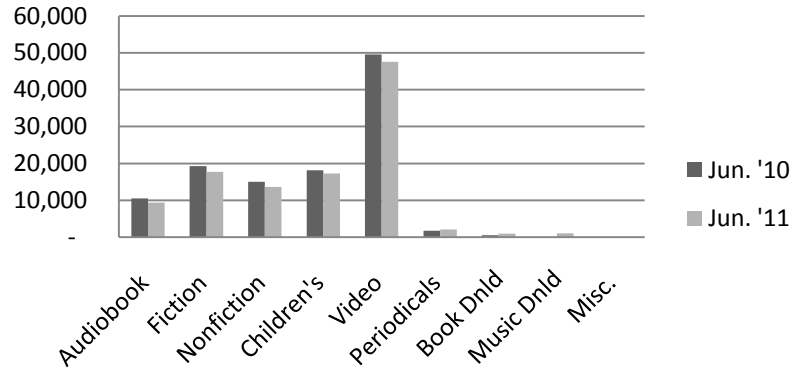
Door Count				
	Jun. '10	Jun. '11	YTD 2010	YTD 2011
Arbor/West	6,142	6,944	6,142	39,340
Bach	8,742	7,750	14,272	44,008
Delaware	10,860	10,361	68,910	57,633
Howe	9,975	7,366	42,061	46,472
Main	44,063	33,216	253,581	217,774
North Albany	5,300	3,202	27,812	23,737
Pine Hills	19,669	19,845	123,196	118,233
Total	104,751	88,684	535,974	547,197

Circulation by Location				
	Jun. '10	Jun. '11	YTD 2010	YTD 2011
Arbor/West	9,179	9,828	9,179	58,344
Bach	12,861	11,828	20,615	69,210
Delaware	13,119	12,083	91,527	74,812
Howe	9,299	7,120	37,719	44,820
Main	44,455	43,134	300,684	263,247
North Albany	4,267	4,039	26,485	23,105
Pine Hills	21,306	21,668	130,757	127,119
Total	114,486	109,700	616,966	660,657

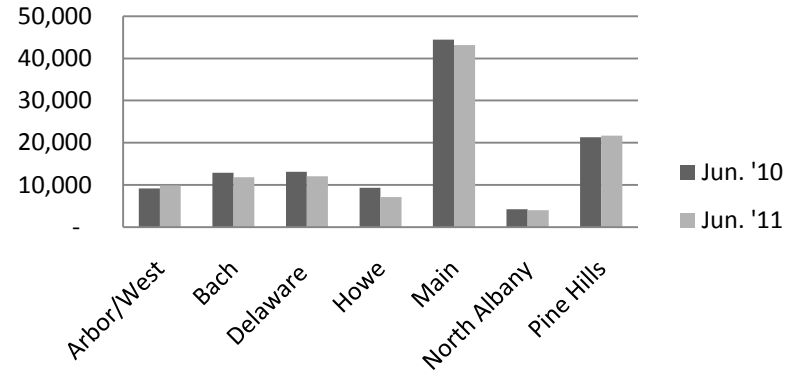
Reference Transactions				
	Jun. '10	Jun. '11	YTD 2010	YTD 2011
Arbor/West	704	783	704	4,439
Bach	410	1,108	677	6,068
Delaware	1,335	1,171	7,136	6,746
Howe	477	846	1,788	6,441
Main	5,270	5,434	35,918	39,284
North Albany	168	363	960	1,505
Pine Hills	1,581	2,279	7,613	11,827
Total	9,945	11,984	54,796	76,310

New Borrower Registrations				
	Jun. '10	Jun. '11	YTD 2010	YTD 2011
Arbor/West	231	43	231	265
Bach	54	75	1,765	358
Delaware	102	79	608	483
Howe	76	45	359	281
Main	434	375	2,071	2,075
North Albany	17	18	102	121
Pine Hills	161	123	890	597
Total	1,075	758	6,026	4,180

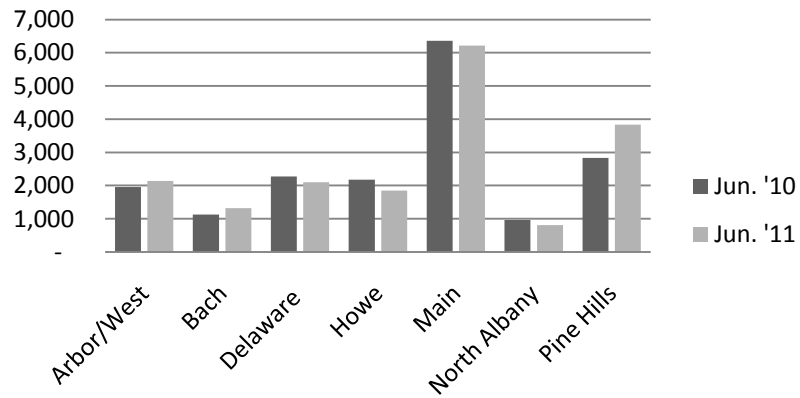
Circulation by Material Type



Circulation by Location



Computer Use



Reference Transactions

