

Monthly Statistical Report

January 2011



Circulation by Material Type (all locations)				
	Jan. '10	Jan. '11	YTD 2010	YTD 2011
Audiobook	10,251	9,878	10,251	9,878
Fiction	15,618	16,745	15,618	16,745
Nonfiction	13,213	14,267	13,213	14,267
Children's	14,079	15,990	14,079	15,990
Video	46,386	55,936	46,386	55,936
Periodicals	1,527	1,964	1,527	1,964
E-Content	394	853	394	853
Misc.	-	2	-	2
Total	101,468	115,635	101,468	115,635

Computer Use				
	Jan. '10	Jan. '11	YTD 2010	YTD 2011
Arbor/West	-	2,170	-	2,170
Bach	-	1,217	-	1,217
Delaware	1,521	1,787	1,521	1,787
Howe	1,030	1,699	1,030	1,699
Main	6,673	6,164	6,673	6,164
North Albany	792	605	792	605
Pine Hills	2,355	2,169	2,355	2,169
Total	12,371	15,811	12,371	15,811

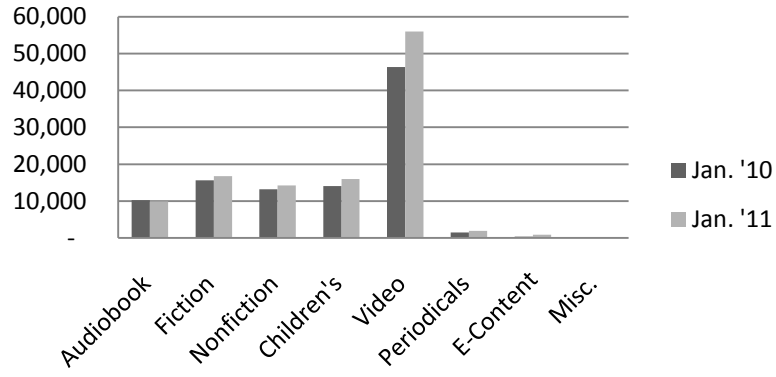
Door Count				
	Jan. '10	Jan. '11	YTD 2010	YTD 2011
Arbor/West	-	5,170	-	5,170
Bach	-	8,323	-	8,323
Delaware	11,886	8,846	11,886	8,846
Howe	4,326	8,599	4,326	8,599
Main	36,998	36,194	36,998	36,194
North Albany	4,116	4,213	4,116	4,116
Pine Hills	22,898	15,722	22,898	15,722
Total	80,224	87,067	80,224	86,970

Circulation by Location				
	Jan. '10	Jan. '11	YTD 2010	YTD 2011
Arbor/West	-	11,517	-	11,517
Bach	-	11,584	-	11,584
Delaware	16,285	13,105	16,285	13,105
Howe	2,553	8,147	2,553	8,147
Main	55,183	45,502	55,183	45,502
North Albany	4,652	3,582	4,652	3,582
Pine Hills	22,333	22,198	22,333	22,198
Total	101,006	115,635	101,006	115,635

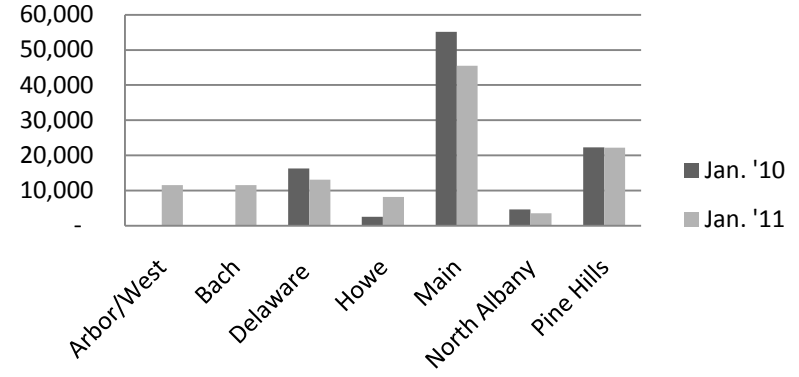
Reference Transactions				
	Jan. '10	Jan. '11	YTD 2010	YTD 2011
Arbor/West	-	668	-	668
Bach	-	618	-	618
Delaware	750	1,253	750	1,253
Howe	175	1,044	175	1,044
Main	5,900	7,099	5,900	7,099
North Albany	108	193	108	193
Pine Hills	952	1,752	952	1,752
Total	7,885	12,627	7,885	12,627

New Borrower Registrations				
	Jan. '10	Jan. '11	YTD 2010	YTD 2011
Arbor/West	-	40	-	40
Bach	-	43	-	43
Delaware	207	77	207	77
Howe	38	63	38	63
Main	331	341	331	341
North Albany	16	28	16	28
Pine Hills	183	102	183	102
Total	775	694	775	694

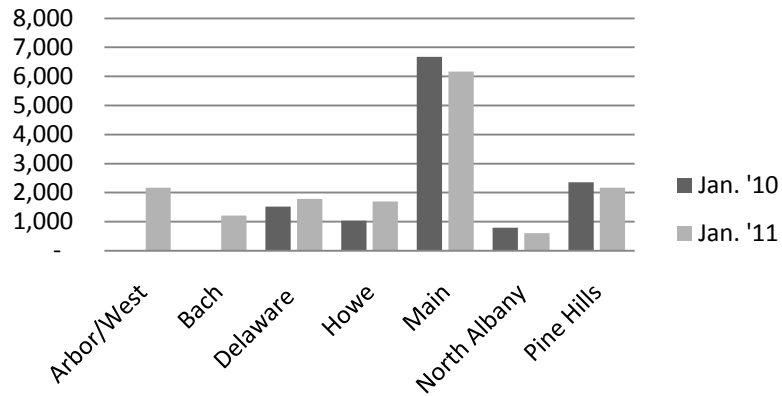
Circulation by Material Type



Circulation by Location



Computer Use



Reference Transactions

