

Monthly Statistical Report

January 2010



Circulation by Material Type (all locations)				
	Jan. '09	Jan. '10	YTD 2009	YTD 2010
Audiobook	9,419	10,251	9,419	10,251
Fiction	13,345	15,618	13,345	15,618
Nonfiction	10,921	13,213	10,921	13,213
Children's	11,097	14,079	11,097	14,079
Video	43,528	46,386	43,528	46,386
Periodicals	2,030	1,527	2,030	1,527
E-Content	340	394	340	394
Misc.	5	-	5	-
Total	90,685	101,468	90,685	101,468

Circulation by Location				
	Jan. '09	Jan. '10	YTD 2009	YTD 2010
Bookmobile	358	462	358	462
Delaware	10,357	16,285	10,357	16,285
Howe	3,328	2,553	3,328	2,553
Main	62,647	55,183	62,647	55,183
North Albany	5,446	4,652	5,446	4,652
Pine Hills	8,549	22,333	8,549	22,333
Total	90,685	101,468	90,685	101,468

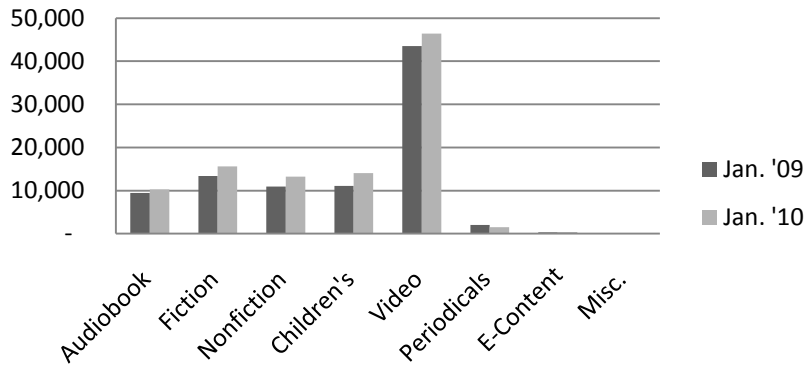
Computer Use				
	Jan. '09	Jan. '10	YTD 2009	YTD 2010
Delaware	1,182	1,521	1,182	1,521
Howe	1,099	1,030	1,099	1,030
Main	6,945	6,673	6,945	6,673
North Albany	945	792	945	792
Pine Hills	1,045	2,355	1,045	2,355
Total	11,216	12,371	11,216	12,371

Reference Transactions				
	Jan. '09	Jan. '10	YTD 2009	YTD 2010
Bookmobile	86	85	86	85
Delaware	607	750	607	750
Howe	360	175	360	175
Main	4,949	5,900	4,949	5,900
North Albany	158	108	158	108
Pine Hills	476	952	476	952
Total	6,636	7,970	6,636	7,970

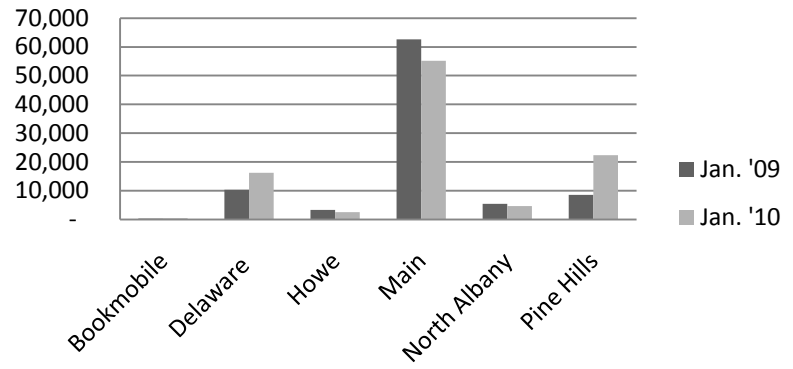
Door Count				
	Jan. '09	Jan. '10	YTD 2009	YTD 2010
Bookmobile	294	338	294	338
Delaware	6,530	11,886	6,530	11,886
Howe	5,477	4,326	5,477	4,326
Main	37,884	36,998	37,884	36,998
North Albany	4,567	4,116	4,567	4,116
Pine Hills	6,341	22,898	6,341	22,898
Total	61,093	80,562	61,093	80,562

New Borrower Registrations				
	Jan. '09	Jan. '10	YTD 2009	YTD 2010
Bookmobile	3	3	3	3
Delaware	47	207	47	207
Howe	38	38	38	38
Main	311	331	311	331
North Albany	19	108	19	16
Pine Hills	48	183	48	183
Total	466	870	466	778

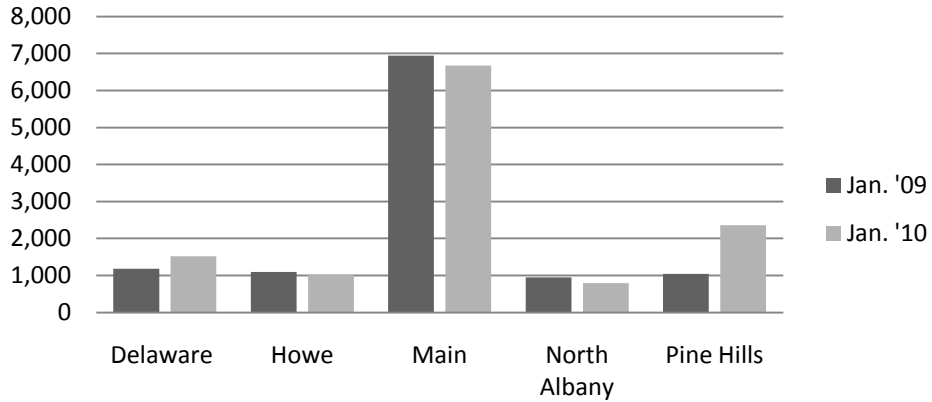
Circulation by Material Type



Circulation by Location



Computer Use



Reference Transactions

