

Monthly Statistical Report

February 2011



Circulation by Material Type (all locations)				
	Feb. '10	Feb. '11	YTD 2010	YTD 2011
Audiobook	10,005	8,668	20,256	18,546
Fiction	14,609	15,017	30,227	31,762
Nonfiction	12,873	12,880	26,086	27,147
Children's	13,812	16,063	27,891	32,053
Video	41,762	47,552	88,148	103,488
Periodicals	1,502	1,935	3,029	3,899
Book Dnld	383	731	777	1,584
Music Dnld	-	998	-	1,210
Misc.	-	3	-	5
Total	94,946	103,847	196,414	219,694

Computer Use				
	Feb. '10	Feb. '11	YTD 2010	YTD 2011
Arbor/West	-	2,732	-	4,902
Bach	-	664	-	2,288
Delaware	2,339	1,854	3,860	3,641
Howe	784	1,467	1,814	3,166
Main	6,198	5,947	12,871	12,111
North Albany	901	894	1,693	1,499
Pine Hills	3,108	2,860	5,463	5,029
Total	13,330	16,418	25,701	32,636

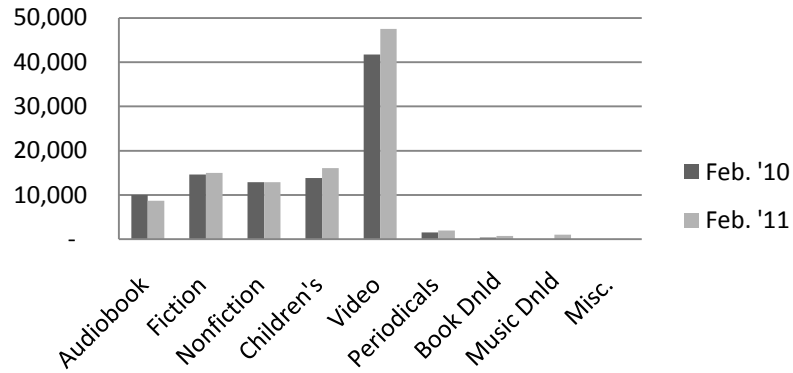
Door Count				
	Feb. '10	Feb. '11	YTD 2010	YTD 2011
Arbor/West	-	7,098	-	12,268
Bach	-	7,238	-	15,561
Delaware	0	8,498	11,886	17,344
Howe	4,410	5,296	8,736	13,895
Main	40,536	33,825	77,534	70,019
North Albany	4,536	4,386	8,652	8,652
Pine Hills	17,795	22,375	40,693	38,097
Total	67,277	88,716	147,501	175,836

Circulation by Location				
	Feb. '10	Feb. '11	YTD 2010	YTD 2011
Arbor/West	0	9,088	-	20,605
Bach	0	10,115	-	21,699
Delaware	16539	12,172	32,824	25,277
Howe	1841	6,786	4,394	14,933
Main	50588	41,737	105,771	87,451
North Albany	4124	3,490	8,776	7,072
Pine Hills	21370	20,459	43,703	42,657
Total	94462	103,847	195,468	219,694

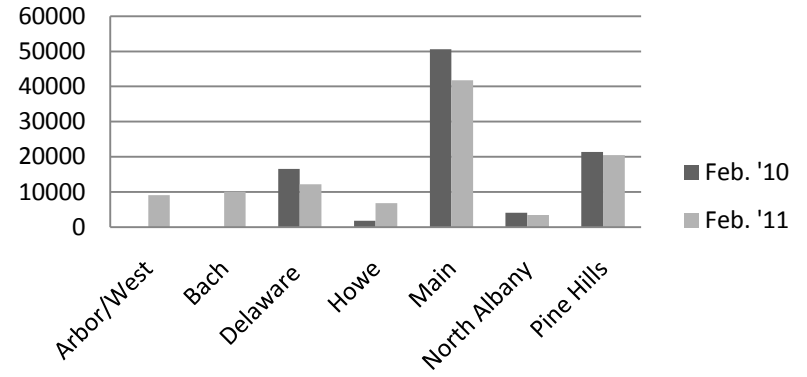
Reference Transactions				
	Feb. '10	Feb. '11	YTD 2010	YTD 2011
Arbor/West	-	964	-	1,632
Bach	-	664	-	1,282
Delaware	1,206	1,012	1,956	2,265
Howe	180	1,146	355	2,190
Main	6,387	6,698	12,287	13,797
North Albany	140	187	248	380
Pine Hills	1,224	1,729	2,176	3,481
Total	9,137	12,400	17,022	25,027

New Borrower Registrations				
	Feb. '10	Feb. '11	YTD 2010	YTD 2011
Arbor/West	-	42	-	82
Bach	-	63	-	106
Delaware	3	82	210	159
Howe	21	21	59	84
Main	303	309	634	650
North Albany	13	16	29	44
Pine Hills	134	89	317	191
Total	474	622	1,249	1,316

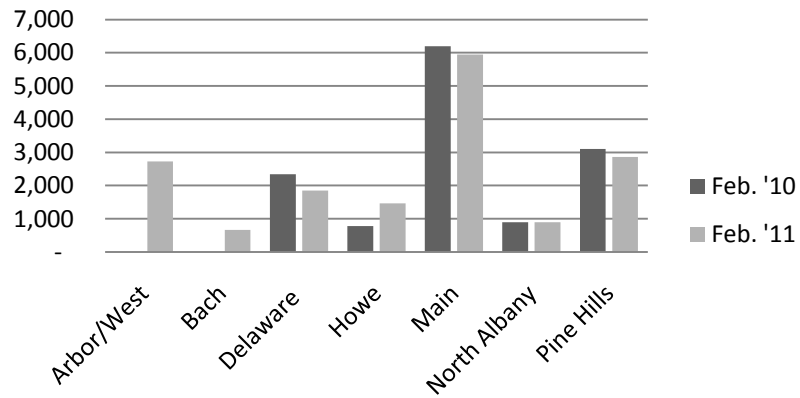
Circulation by Material Type



Circulation by Location



Computer Use



Reference Transactions

