

Monthly Statistical Report

August 2010



Circulation by Material Type (all locations)				
	Aug. '09	Aug. '10	YTD 2009	YTD 2010
Audiobook	7,993	11,101	68,169	84,321
Fiction	15,862	21,400	112,671	139,588
Nonfiction	11,347	15,927	91,463	114,553
Children's	12,733	20,891	93,142	134,478
Video	38,673	56,130	319,709	383,105
Periodicals	1,855	1,868	16,819	13,955
E-Content	340	517	2,379	3,485
Misc.	24	29	302	82
Total	88,827	127,863	704,654	873,567

Circulation by Location				
	Aug. '09	Aug. '10	YTD 2009	YTD 2010
Arbor/West		14,647	-	37,717
Bach		15,411	-	50,499
Delaware	10,386	14,911	81,964	121,423
Howe	3,392	9,678	26,605	56,393
Main	59,901	46,099	479,540	392,631
North Albany	5,089	4,573	40,454	35,415
Outreach	1,049	46	6,258	2,937
Pine Hills	9,010	22,498	69,833	176,552
Total	88,827	127,863	704,654	873,567

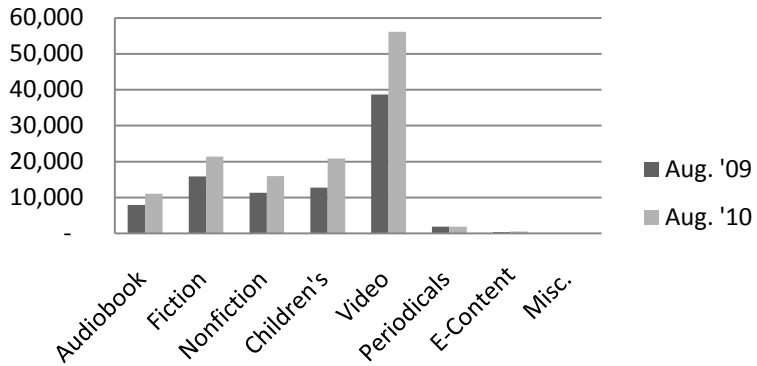
Computer Use				
	Aug. '09	Aug. '10	YTD 2009	YTD 2010
Arbor/West	-	3,099	-	7,899
Bach	-	1,691	-	5,027
Delaware	1,171	2,835	11,710	18,101
Howe	788	2,587	8,107	14,020
Main	7,468	6,579	57,380	51,660
North Albany	832	1,113	7,164	7,126
Pine Hills	1,191	3,422	9,294	21,830
Total	11,450	21,326	93,655	125,663

Reference Transactions				
	Aug. '09	Aug. '10	YTD 2009	YTD 2010
Arbor/West	-	926	-	2693
Bach	-	1,347	-	2874
Delaware	517	1,357	4,440	9,888
Howe	517	690	3,054	2,914
Main	6,184	5,808	44,621	47,488
North Albany	150	141	1,249	1,254
Outreach	161	0	1,068	493
Pine Hills	487	2,260	2,834	11,006
Total	8,016	12,529	57,266	78,610

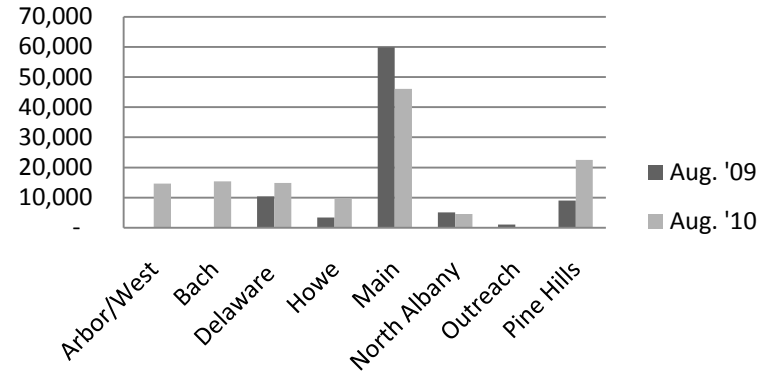
Door Count				
	Aug. '09	Aug. '10	YTD 2009	YTD 2010
Arbor/West	-	10,104	-	27,073
Bach	-	9,687	-	30,404
Delaware	10,766	11,368	65,244	91,818
Howe	4,859	8,456	38,878	58,895
Main	44,265	45,121	366,153	334,462
North Albany	4,995	4,500	35,750	37,106
Outreach	547	0	3,772	2,018
Pine Hills	6,910	23,396	54,523	167,679
Total	72,342	112,632	564,320	749,455

New Borrower Registrations				
	Aug. '09	Aug. '10	YTD 2009	YTD 2010
Arbor/West	-	123	-	501
Bach	-	47	-	227
Delaware	75	122	486	1,038
Howe	45	81	264	506
Main	327	464	2,274	2,989
North Albany	25	20	117	145
Outreach	41	0	96	31
Pine Hills	31	190	282	1,232
Total	544	1,047	3,519	6,669

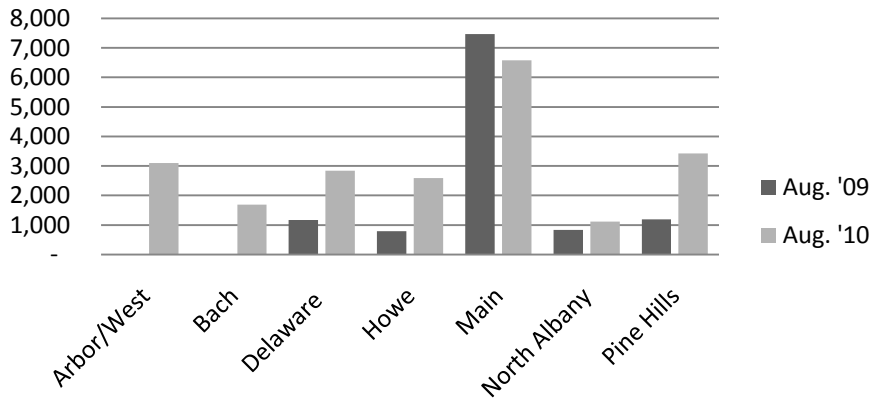
Circulation by Material Type



Circulation by Location



Computer Use



Reference Transactions

